

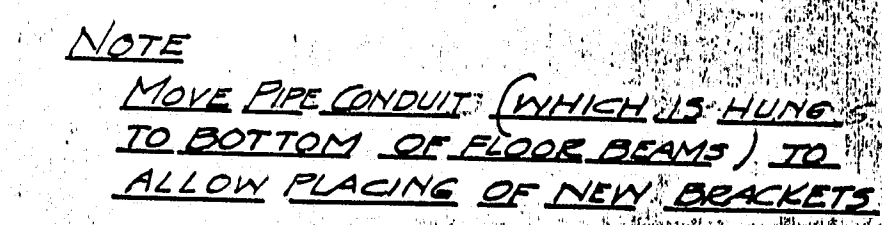
APPROX. WGT. 2400

SECT. C-C

112-73

MAINE CENTRAL R.R.
62.42 RINES HILL O.H. BRIDGE
AUGUSTA
SIDEWALK FOR WEST SIDE
SCALE $\frac{3}{4} = 1'-0"$ MAY 1923.
SHEET 2 OF 2 DRAWN

APPROVED Walter H. Morris
BRIDGE ENGINEER



SHEET 1 OF 2